

**Custom-Southern, Auction Equipment Listing**



**Div:** 1000 **MV:** \$0  
**Asset:** 5017  
 AIR COMPRESSOR PORTABLE  
 MFG: CAMPBELL-HAUSFIELD  
 M: W610003AJ  
 SN: L10/19/98-03602  
 5-HP 110V, 60C, 1-PH, 20-GALLON,



**Div:** 1000 **MV:** \$0  
**Asset:** 5003  
 ARBOR PRESS BENCH TYPE  
 MFG: GRIZZLY  
 4-TON, BENCH MODEL



**Div:** 1000 **MV:** \$0  
**Asset:** 5008  
 AIR COMPRESSOR SCREW TYPE Stationary  
 MFG: GARDNER-DENVER  
 M: EBERGC  
 SN: M43399  
 30-HP, 220V, 60C, 3-PH, ID# BABCBBB,  
 PRESSURE DIFFERENTIAL SEPERATOR



**Div:** 1000 **MV:** \$0  
**Asset:** 5021  
 ARBOR PRESS BENCH TYPE  
 MFG: JET  
 1-TON, BENCH MODEL



**Div:** 1000 **MV:** \$0  
**Asset:** 5018  
 AIR COMPRESSOR Stationary  
 MFG: SPEEDAIRE  
 M: 1WD38  
 SN: R0031096  
 60-HP, 220V, 60C, 3-PH



**Div:** **MV:** \$0  
**Asset:** 5058  
 BICYCLES, ASSORTED TYPES  
 1-ADULT, 1-CHILD



**Div:** 2000 **MV:** \$0  
**Asset:** 5034  
 AIR COMPRESSOR Stationary  
 MFG: SPEEDAIRE  
 M: 5Z639A  
 SN: L9/28/98-01412  
 7.5-HP, 230V, 60C, 1-PH, REFRIGERATED  
 AIR DRYER



**Div:** **MV:** \$0  
**Asset:** 5054  
 BREAK ROOM FURNITURE & FIXTURES  
 CABINET, MICROWAVE and OVEN



**Div:** 2000 **MV:** \$0  
**Asset:** 5047  
 AIR COMPRESSOR Stationary  
 MFG: QUINCEY  
 M: QT15  
 SN: 6132083  
 60-HP, 220V, 60C, 3-PH



**Div:** 3000 **MV:** \$0  
**Asset:** 5051  
 CENTRIFUGAL AIR, PUMP/BLOWER UNIT  
 MFG: CENTRAL  
 M: 83810  
 1-HP, 110V. 60C, 1-PH



**Div:** **MV:** \$0  
**Asset:** 5084  
 AIR COMPRESSOR, HOSES, PARTS, ETC.  
 AIR HOSES, ASSORTED LENGTHS



**Div:** 1000 **MV:** \$0  
**Asset:** 5002  
 CNC TURRET LATHE METAL CUTTING  
 MFG: OKUMA  
 M: CROWN L1060  
 SN: 1709  
 220V, 60C, 3-PH, DRAWING# AT0002, CHIP  
 CONVEYOR, 230V, 60C, 1-PH



**Div:** **MV:** \$0  
**Asset:** 5099  
 ALUMINUM Sheets/Shapes  
 MACHINED ALUMINUM TUBING, 2-1/4"  
 DIAMETER., 37-7/8" LONG



**Div:** 1000 **MV:** \$0  
**Asset:** 5010  
 CNC TURRET LATHE METAL CUTTING  
 MFG: IKEGAI  
 M: TU26  
 SN: 52856U  
 220V, 60C, 3-PH, PRODUCTION # T3511-06,  
 HYDRAULIC M# 5098-9, YR-4, 220V, 60C, 3-PH,  
 MACHINE OIL TANK & PUMP



**Div:** **MV:** \$0  
**Asset:** 5103  
 ANTIQUE TABLES, CHAIRS and  
 ANTIQUE DINING ROOM TABLE, 31" T, 42"  
 W, EXTENDS TO 72" LENGTH



**Div:** 1000 **MV:** \$0  
**Asset:** 5012  
 CNC TURRET LATHE METAL CUTTING  
 MFG: IKEGAI  
 M: T3511-05  
 SN: 52855V  
 220V, 60C, 3-PH

**Custon-Southern, Auction Equipment Listing**



**Div:** 2000 **MV:** \$0  
**Asset:** 5037  
 CNC TURRET LATHE METAL CUTTING  
 MFG: YANG  
 M: SMV-600  
 SN: Z00857  
 POWER UNIT, KAUKAN, M# CHT-3A, IMAGE # 1232



**Div:** 1000 **MV:** \$0  
**Asset:** 5028  
 DENT LESS REPAIR TOOLS  
 MFG: CUSTOM TOOL CRAFTERS  
 DENT LESS REPAIR TOOLS, Assorted Types & Sizes



**Div:** 2000 **MV:** \$0  
**Asset:** 5039  
 CNC TURRET LATHE METAL CUTTING  
 MFG: HYUNDAI  
 M: HIT-3F  
 SN: 34277008  
 220V, 50/60-HRZ, DRAWING # 342204HEO



**Div:** 1000 **MV:** \$0  
**Asset:** 5023  
 DIP TANK  
 MFG: CUSTOM  
 DIP TANK



**Div:** 2000 **MV:** \$0  
**Asset:** 5046  
 CNC TURRET LATHE METAL CUTTING  
 MFG: HAAS  
 M: LL2  
 SN: 60921  
 208/230V, 60C, 3-PH



**Div:** 2000 **MV:** \$0  
**Asset:** 5038  
 DOUBLE END BORING MACHINE  
 MFG: LUMCO  
 230/460V, 60C, 3-PH, BALDOR MOTORS,  
 SKF DRIVES 220V, 60C, 3-PH, 1750 RPM, 2-1 REDUCTION



**Div:** 2000 **MV:** \$0  
**Asset:** 5048  
 CNC TURRET LATHE METAL CUTTING  
 MFG: HAAS  
 M: HL2  
 SN: 60920  
 208/230V, 60C, 3-PH



**Div:** 2000 **MV:** \$0  
**Asset:** 5042  
 DOUBLE END BORING MACHINE  
 MFG: LUMCO  
 M: 5200  
 SN: SR-4514  
 230/460V, 60C, 3-PH, BALDOR MOTORS,  
 SKF DRIVES 220V, 60C, 3-PH, 1750 RPM, 2-1 REDUCTION



**Div:** **MV:** \$0  
**Asset:** 5128  
 CUTTING TORCH, Gauges, Hoses, Cart, etc.  
 MFG: VICTOR



**Div:** 2000 **MV:** \$0  
**Asset:** 5044  
 DOUBLE END BORING MACHINE  
 MFG: LUMCO  
 M: AS7058  
 SN: 3/12/2007  
 230/460V, 60C, 3-PH, BALDOR MOTORS,  
 SKF DRIVES 220V, 60C, 3-PH, 1750 RPM, 2-1 REDUCTION



**Div:** **MV:** \$0  
**Asset:** 5129  
 CUTTING TORCH, Gauges, Hoses, etc.  
 MFG: VICTOR



**Div:** 2000 **MV:** \$0  
**Asset:** 5045  
 DOUBLE END BORING MACHINE  
 MFG: LUMCO  
 230/460V, 60C, 3-PH, BALDOR MOTORS,  
 SKF DRIVES 220V, 60C, 3-PH, 1750 RPM, 2-1 REDUCTION



**Div:** **MV:** \$0  
**Asset:** 5130  
 CUTTING TORCH, Gauges, Hoses, etc.  
 MFG: VICTOR



**Div:** 2000 **MV:** \$0  
**Asset:** 5029  
 DRILL PRESS Floor Type  
 M: 16-SPEED  
 SN: 970603  
 110V, 60C, 1-PH



**Div:** 1000 **MV:** \$0  
**Asset:** 5015  
 DEBURR TUMBLER-WASHER  
 MFG: BURR KING  
 M: VIBRA KING  
 SN: 200SX  
 110V, 60, 1-PH

**Div:** 2000 **MV:** \$0  
**Asset:** 5029  
 DRILL PRESS Floor Type  
 M: 16-SPEED  
 110V, 60C, 1-PH

**Custon-Southern, Auction Equipment Listing**



**Div:** 2000 **MV:** \$0  
**Asset:** 5041  
DUST COLLECTOR UNIT  
MFG: JET  
M: DC-1200A-1  
SN: 1060378  
2-HP, 110V, 60C, 1-PH



**Div:** 2000 **MV:** \$0  
**Asset:** 5036  
FILTERING SYSTEM  
MFG: AQUA PURE  
M: AP12T  
WATER FILTER SYSTEM, 180 PSIG, 100 DEGREESMAX



**Div:** **MV:** \$0  
**Asset:** 5085  
ELECTRIC MOTOR  
MFG: MARATHON  
MOTOR WITH BUFFING WHELL, 3/4-HP,  
230VAC, 60C, 1-PH



**Div:** 1000 **MV:** \$0  
**Asset:** 5013  
FORKLIFT CUSHION TIRE  
MFG: CLARK  
M: CGC30  
SN: 365L-0534-9488FB  
6,000# LPG, 189" LIFT, SIDE SHIFT, 3-STAGE,36" FORKS



**Div:** **MV:** \$0  
**Asset:** 5064  
ELECTRICAL TRANSFORMERS **HIGH**  
MFG: EGS  
3.0 KVA, 120/240 PRIMARY, 16/32  
SECONDARY



**Div:** **MV:** \$0  
**Asset:** 5057  
FUEL TANKS PUMPS & EQUIPMENT  
MFG: CUSTOM  
5-GALLON PLASTIC TANK, ALUMINUM  
OUTSIDE



**Div:** **MV:** \$0  
**Asset:** 5104  
ELECTRICAL TRANSFORMERS **HIGH**  
MFG: FEDERAL-PACIFIC  
M: DRY  
SN: E37783  
25 KVA, PRIMARY 480 VAC, SECONDARY  
208/210 VAC



**Div:** 1000 **MV:** \$0  
**Asset:** 5014  
GAUGES, ASSORTED TYPES & USES  
MFG: VERMONT  
PRECISION PLUG GAUGES, .061" THROUGH  
1.00"



**Div:** **MV:** \$0  
**Asset:** 5105  
ELECTRICAL TRANSFORMERS **HIGH**  
MFG: SQUARE D  
M: 45T34  
SN: 24TS22C  
45 KVA, PRIMARY 280 VAC, SECONDARY  
208/120 VAC,



**Div:** **MV:** \$0  
**Asset:** 5087  
GREASE, OIL, LUBRICANTS, Etc.  
ASSORTED TYPES & QUANTITIES



**Div:** **MV:** \$0  
**Asset:** 5073  
FAN/BLOWER, PORTABLE  
MFG: CUSTOM  
13-1/2" W, 39" W, 39" T, 120 VDC MOTOR



**Div:** 2000 **MV:** \$0  
**Asset:** 5035  
GRINDER/BUFFER Bench Mount  
MFG: BALDOR  
M: 409B  
SN: P9-95  
1-1/2-HP, 220V, 60C, 3-PH



**Div:** **MV:** \$0  
**Asset:** 5089  
FASTENERS All Types  
ASSORTED FACTENERS, ETC.



**Div:** 2000 **MV:** \$0  
**Asset:** 5127  
GRINDER/BUFFER Pedestal  
220V, 60C, 3-PH



**Div:** 1000 **MV:** \$0  
**Asset:** 5027  
FILTERING SYSTEM  
MFG: AIRTEK  
M: TW100  
SN: 95L-6883  
WATER FILTER SYSTEM, 180 PSIG, 100  
DEGREES MAX.



**Div:** 1000 **MV:** \$0  
**Asset:** 5053  
HYDRAULIC BENDING MACHINE  
MFG: PRINCE  
HYDRAULIC BENDING MACHINE, PUMP  
UNIT 7-1/2 HP, 208/230/110V, 60C, 3-PH,  
SPECIAL PURPOSE, DENT LESS REPAIR  
TOOLS,

**Custon-Southern, Auction Equipment Listing**



**Div:** 1000 **MV:** \$0  
**Asset:** 5011  
 HYDRAULIC PUMP UNIT  
 MFG: VICKERS  
 M: 9GL-33397-6  
 SN: 02-1178017  
 HYDRAULIC PUMP UNIT



**Div:** **MV:** \$0  
**Asset:** 5086  
 MAGNETS, GENERAL USE  
 MFG: GORDON  
 SN: 93245  
 MAGNETIC SWEEPER, 30"



**Div:** 1000 **MV:** \$0  
**Asset:** 5001  
 IRONWORKER METAL PROCESSING  
 MFG: SCOTSMAN  
 M: 5014CM  
 SN: 1911K0303  
 1-HP, 230V, 60C, 1-PH, ROUND AND ANGLE  
 CUTTING JUGS



**Div:** **MV:** \$0  
**Asset:** 5056  
 MATERIAL STORAGE RACK  
 MFG: CUSTOM  
 50" TALL, 60" WIDE, 114" LONG, 6-CASTERS



**Div:** 2000 **MV:** \$0  
**Asset:** 5043  
 LATHE METAL CUTTING  
 MFG: JET  
 M: 321357  
 SN: 0006ZY2129  
 LATHE WITH TOOLING AND SPARE PARTS,  
 220V,60C,3-PH



**Div:** **MV:** \$0  
**Asset:** 5132  
 MATERIAL STORAGE RACK  
 STEEL, 24"W, 16"L, 56"T



**Div:** 3000 **MV:** \$0  
**Asset:** 5052  
 LATHE METAL CUTTING  
 MFG: JET  
 M: Y1325-Y1660  
 SN: 99-D46D003  
 220V,60C,3-PH



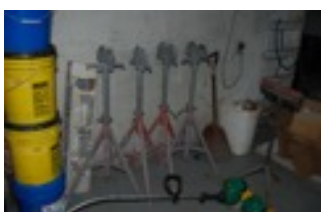
**Div:** 1000 **MV:** \$0  
**Asset:** 5009  
 METAL CUTTING SAW  
 MFG: SCOTSMAN  
 M: CPO350  
 SN: 1495NF1000  
 2.5-HP, 230, 60, 1-PH, TYPE  
 CPO350NE/PN/PD



**Div:** 1000 **MV:** \$0  
**Asset:** 5019  
 MACHINE SHOP Tools & Accessories  
 MFG: HTC  
 M: HSS-18  
 MATERIAL STEADY REST (2 EA)



**Div:** **MV:** \$0  
**Asset:** 5118  
 METAL STAMPING SETS  
 MFG: PRYOR  
 STEEL STAMP SET



**Div:** 2000 **MV:** \$0  
**Asset:** 5030  
 MACHINE SHOP Tools & Accessories  
 MFG: RIGID  
 MATERIAL STEADY REST (4 EA)



**Div:** 1000 **MV:** \$0  
**Asset:** 5006  
 MILLING MACHINE VERTICAL &  
 MFG: VECTRAX  
 M: GS16V  
 SN: 841014  
 220V,60C,3-PH



**Div:** 2000 **MV:** \$0  
**Asset:** 5030  
 MACHINE SHOP Tools & Accessories  
 MFG: CUSTOM  
 MATERIAL STEADY REST



**Div:** 1000 **MV:** \$0  
**Asset:** 5024  
 MILLING MACHINE VERTICAL &  
 MFG: CHEVALIER  
 M: FM33K  
 SN: KC84A008  
 220V,60C,3-PH



**Div:** **MV:** \$0  
**Asset:** 5074  
 MAGNETS, GENERAL USE  
 MAGNETS, ASSORTED SIZES & TYPES



**Div:** 1000 **MV:** \$0  
**Asset:** 5020  
 MISCELLANEOUS PARTS TOOLS &  
 ASSORTED TOOLS, POWER AND HAND,  
 (DOES NOT INCLUDE TABLE)

**Custon-Southern, Auction Equipment Listing**



**Div:**                   **MV:** \$0  
**Asset:** 5102  
 MISCELLANEOUS PARTS TOOLS &  
 GROCERY TYPE CARTS



**Div:** 2000                   **MV:** \$0  
**Asset:** 5031  
 PALLET JACK MANUAL  
 MFG: CRANE  
 5,000# CAPACITY



**Div:**                   **MV:** \$0  
**Asset:** 5109  
 MISCELLANEOUS PARTS TOOLS &  
 NEW, 120 GRIT, SCREEN CLOTH, SANDING  
 DISCS (DOES NOT INCLUDE TABLE)



**Div:**                   **MV:** \$0  
**Asset:** 5090  
 PALLET RACKING Uprights Beams etc.  
 49" X 96" DECKS (4) 96" TALL



**Div:**                   **MV:** \$0  
**Asset:** 5108  
 MISCELLANEOUS PARTS TOOLS &  
 ELECTRONIC COMPONENTS AND DRUM,  
 SIEMENS AND OTHERS (DOES NOT  
 INCLUDE TABLE)



**Div:**                   **MV:** \$0  
**Asset:** 5082  
 PARTS BINS  
 ASSORTED SIZES, PLASTIC STACK BINS



**Div:**                   **MV:** \$0  
**Asset:** 5121  
 MISCELLANEOUS PARTS TOOLS &  
 ASSORTED PARTS, (DOES NOT INCLUDE  
 TABLE)



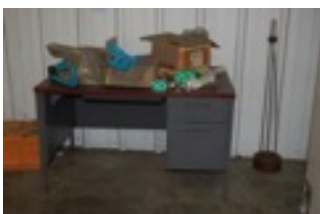
**Div:**                   **MV:** \$0  
**Asset:** 5107  
 PNEUMATIC TOOLS  
 MFG: TURBO  
 CHAMFER CUTTER, 60-120 PSI, 55,000 RPM



**Div:**                   **MV:** \$0  
**Asset:** 5061  
 MOTOR, GEAR REDUCTION  
 MFG: LEESON  
 3/4-HP, 208/210VAC, 3-PH, 2,500 RPM,



**Div:**                   **MV:** \$0  
**Asset:** 5079  
 PORTABLE TOOLS & EQUIPMENT  
 MFG: EAGER BEAVER  
 BLOWER, 2-CYCLE GAS OPERATED



**Div:**                   **MV:** \$0  
**Asset:** 5088  
 OFFICE Desks, Chairs, Tables, cabinets Etc.  
 2-DRAWER, 29-1/2" T, 30" W, 48" L



**Div:** 2000                   **MV:** \$0  
**Asset:** 5032  
 PRESSURE WASHER  
 MFG: JRI  
 M: PCS-3148  
 SN: 210243  
 1-1/2-HP, 230V. 60C, 1-PH



**Div:**                   **MV:** \$0  
**Asset:** 5124  
 OFFICE EQUIPMENT, COMPUTERS, TIME  
 MFG: AMANO  
 M: PIX.55  
 TIME MACHINE (DOES NOT INCLUDE  
 TABLE)



**Div:**                   **MV:** \$0  
**Asset:** 5101  
 PROPANE PRESSURE TANK  
 FORKLIFT SIZE PROPANE TANKS, (3)



**Div:** 1000                   **MV:** \$0  
**Asset:** 5007  
 OVEN, COMMERCIAL WALK-IN  
 MFG: GRIEVE  
 M: B1-1000  
 SN: 94662A0608  
 HIGH TEMPERATURE, HEAT INPUT, 1200F,  
 649C, 5-HP, 220V, 60C, 3-PH, 8-KW

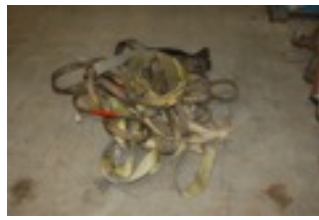


**Div:**                   **MV:** \$0  
**Asset:** 5063  
 REMOTE OPERATED, MOTOR, GEAR  
 UTILITY WINCH, 12VDC, 2,000# CAPACITY

Custon-Southern, Auction Equipment Listing



**Div:** 1000 **MV:** \$0  
**Asset:** 5026  
SANDER, BELT TYPE  
MFG: WILTON  
SANDER, 110V, 60C, 1-PH



**Div:** **MV:** \$0  
**Asset:** 5093  
SLINGS and STRAPS  
ASSORTED SLINGS, HOLD DOWNS, ETC.



**Div:** 2000 **MV:** \$0  
**Asset:** 5040  
SANDER, BELT TYPE  
MFG: STEPHEN BADER  
1/2-HP, 220/440V, 60C, 1800 RPM



**Div:** **MV:** \$0  
**Asset:** 5071  
STEEL ANGLES I-BEAMS & CHANNELS  
ASSORTED TYPES, SIZES, LENGTHS



**Div:** **MV:** \$0  
**Asset:** 5076  
SANDER, BELT TYPE  
PARTS ONLY



**Div:** **MV:** \$0  
**Asset:** 5075  
STORAGE RACKS & BENCHES  
MAIL BOX STAND



**Div:** **MV:** \$0  
**Asset:** 5076  
SANDER, BELT TYPE  
PARTS ONLY



**Div:** 2000 **MV:** \$0  
**Asset:** 5033  
STRAPPING TOOL & CART  
MFG: SIGNOID  
STRAPPING MACHINE, PORTABLE



**Div:** **MV:** \$0  
**Asset:** 5095  
SCALE-PLATFORM TYPE PORTABLE  
MFG: DYMO  
M: 410  
150 # CAPACITY



**Div:** 2000 **MV:** \$0  
**Asset:** 5125  
STRAPPING TOOL & CART  
MFG: SIGNOID  
STRAPPING MACHINE, PORTABLE, WITH TOOLS



**Div:** 1000 **MV:** \$0  
**Asset:** 5025  
SHEET METAL FABRICATION EQUIP  
MFG: PEXTO  
SHEETMETAL FOLDER, MANUAL



**Div:** 2000 **MV:** \$0  
**Asset:** 5126  
STRAPPING TOOL & CART  
MFG: SIGNOID  
STRAPPING MACHINE, PORTABLE WITH TOOLS AND CLIPS



**Div:** **MV:** \$0  
**Asset:** 5083  
SHIPPING ROOM EQUIPMENT  
SHRINK WRAPPING AND DISPENSER



**Div:** **MV:** \$0  
**Asset:** 5055  
TIRES USED AUTO, TRUCK & INDUSTRIAL  
20.5X8.0-10, 5-HOLE WHEEL



**Div:** **MV:** \$0  
**Asset:** 5094  
SHOP TOOLS, EQUIPMENT, FURNITURE,  
MECHANICS CREEPER



**Div:** **MV:** \$0  
**Asset:** 5110  
TOOLING CUTTING TOOL Bits DRILL Etc.  
CARBIDE CUTTING TIPS, ASSORTED SIZES  
(DOES NOT INCLUDE TABLE)

Custom-Southern, Auction Equipment Listing



**Div:** **MV:** \$0  
**Asset:** 5111  
TOOLING CUTTING TOOL Bits DRILL Etc.  
TAIL STOCKS, DEEP CUTTING & SPECIAL  
TYPES (DOES NOT INCLUDE TABLE)



**Div:** **MV:** \$0  
**Asset:** 5131  
TOOLING CUTTING TOOL Bits DRILL Etc.  
ASSORTED DRILL BITS AND REAMERS



**Div:** **MV:** \$0  
**Asset:** 5112  
TOOLING CUTTING TOOL Bits DRILL Etc.  
ASSORTED CHUCK AND TOOLS (DOES  
NOT INCLUDE TABLE)



**Div:** 1000 **MV:** \$0  
**Asset:** 5005  
WELDER TIG TYPE  
MFG: LINCOLN  
M: 175  
SN: 10265-V19900712661  
WELDER, SQUARE WAVE, TIG, 220V,60C,1-  
PH,



**Div:** **MV:** \$0  
**Asset:** 5113  
TOOLING CUTTING TOOL Bits DRILL Etc.  
LATHE COLLETTIS (DOES NOT INCLUDE  
TABLE)



**Div:** **MV:** \$0  
**Asset:** 5122  
WELDING EQUIPMENT & COMPONENTS  
ASSORTED WELDING SUPPLIES, (DOES  
NOT INCLUDE TABLE)



**Div:** **MV:** \$0  
**Asset:** 5114  
TOOLING CUTTING TOOL Bits DRILL Etc.  
SET UP TOOLS (DOES NOT INCLUDE  
TABLE)



**Div:** **MV:** \$0  
**Asset:** 5077  
WELDING TABLE, STEEL  
1/2" STEEL PLATE TOP, 32" W, 38" T, 62" L,  
INCLUDING 6" MECHANICS VISE



**Div:** **MV:** \$0  
**Asset:** 5115  
TOOLING CUTTING TOOL Bits DRILL Etc.  
SET UP BLOCKS (DOES NOT INCLUDE  
TABLE)



**Div:** **MV:** \$0  
**Asset:** 5078  
WELDING TABLE, STEEL  
1/2" STEEL PLATE TOP, 31" W, 38" T, 61" L



**Div:** **MV:** \$0  
**Asset:** 5116  
TOOLING CUTTING TOOL Bits DRILL Etc.  
SPECIALTY METAL CUTTING TOOLS (DOES  
NOT INCLUDE TABLE)



**Div:** **MV:** \$0  
**Asset:** 5059  
WORK BENCHES/TABLES/CABINETS  
WOODEN, 38" TALL, 49" WIDE, 97" LONG



**Div:** **MV:** \$0  
**Asset:** 5119  
TOOLING CUTTING TOOL Bits DRILL Etc.  
SMALL DRILL BITS, ASSORTED SIZES  
(DOES NOT INCLUDE TABLE)



**Div:** **MV:** \$0  
**Asset:** 5060  
WORK BENCHES/TABLES/CABINETS  
WOODEN, 35-1/2" T, 36" W, 97" LOMG



**Div:** **MV:** \$0  
**Asset:** 5120  
TOOLING CUTTING TOOL Bits DRILL Etc.  
PARTS BINS AND CONTENTS, (3) (DOES  
NOT INCLUDE TABLE)



**Div:** **MV:** \$0  
**Asset:** 5062  
WORK BENCHES/TABLES/CABINETS  
11" T, 15" W, 25-1/2" L, STAINLESS

**Custon-Southern, Auction Equipment Listing**



**Div:** **MV:** \$0  
**Asset:** 5065  
WORK BENCHES/TABLES/CABINETS  
54" T, 40-1/4" W, 61" L, 4-SWIVEL CASTERS



**Div:** **MV:** \$0  
**Asset:** 5081  
WORK BENCHES/TABLES/CABINETS  
WOODEN SHELF, 49" T, 48" W, 72" L



**Div:** **MV:** \$0  
**Asset:** 5066  
WORK BENCHES/TABLES/CABINETS  
STOOL, 30" T



**Div:** **MV:** \$0  
**Asset:** 5091  
WORK BENCHES/TABLES/CABINETS  
35" T, 25-1/2" W, 26-1/2" L



**Div:** **MV:** \$0  
**Asset:** 5067  
WORK BENCHES/TABLES/CABINETS  
TOOL REST, ADJUSTABLE, 30" TALL



**Div:** **MV:** \$0  
**Asset:** 5092  
WORK BENCHES/TABLES/CABINETS  
1/4" STEEL TOP, 3: T, 32-1/2" W, 48" L, R-DOOR



**Div:** **MV:** \$0  
**Asset:** 5068  
WORK BENCHES/TABLES/CABINETS  
STEEL, 27" T, 16" W, 31" L



**Div:** **MV:** \$0  
**Asset:** 5097  
WORK BENCHES/TABLES/CABINETS  
STEEL FRAME, 37" T, 27" W, 30-1/2" L



**Div:** **MV:** \$0  
**Asset:** 5069  
WORK BENCHES/TABLES/CABINETS  
31-1/2" T, 12" W, 62" L, STEEL FRAME,  
GRANITE TOP



**Div:** **MV:** \$0  
**Asset:** 5096  
WORK BENCHES/TABLES/CABINETS  
STEEL FRAME, 24" T, 22" W, 46" L,



**Div:** **MV:** \$0  
**Asset:** 5070  
WORK BENCHES/TABLES/CABINETS  
STEEL CAGE, 34" T, 22" W, 43-3/4" LONG



**Div:** **MV:** \$0  
**Asset:** 5123  
WORK BENCHES/TABLES/CABINETS  
39-1/2" T, 48" W, 96" L, STEEL, TABLE ONLY



**Div:** **MV:** \$0  
**Asset:** 5072  
WORK BENCHES/TABLES/CABINETS  
STAINLESS CABINET, 40" T, 25-1/2" W, 46" L,  
2-SWIVEL & 2-RIGID CASTERS, DOORS  
LATCH SHUT



**Div:** **MV:** \$0  
**Asset:** 5098  
WORK BENCHES/TABLES/CABINETS  
WORK BENCH, 6" VISE AND CONTENTS ON  
BENCH



**Div:** **MV:** \$0  
**Asset:** 5080  
WORK BENCHES/TABLES/CABINETS  
39-1/2" T, 48" W, 96" L, STEEL (DOES NOT  
INCLUDE TABLE)



**Div:** **MV:** \$0  
**Asset:** 5106  
WORK BENCHES/TABLES/CABINETS  
SET UP AND PRODUCTION TOOLS  
INCLUDED, CABINET 33-1/2" T, 21-1/2" W,  
46" L



**Custom-Southern, Auction Equipment Listing**

---



**Div:** MV: \$0  
**Asset:** 5134  
WORK BENCHES/TABLES/CABINETS  
METAL, 18"W. 21-1/2"L, 26-1/2"T

---



**Div:** MV: \$0  
**Asset:** 5133  
WORK BENCHES/TABLES/CABINETS  
METAL, 21-1/2"W, 21-1/2"L, 10-1/2"T

---